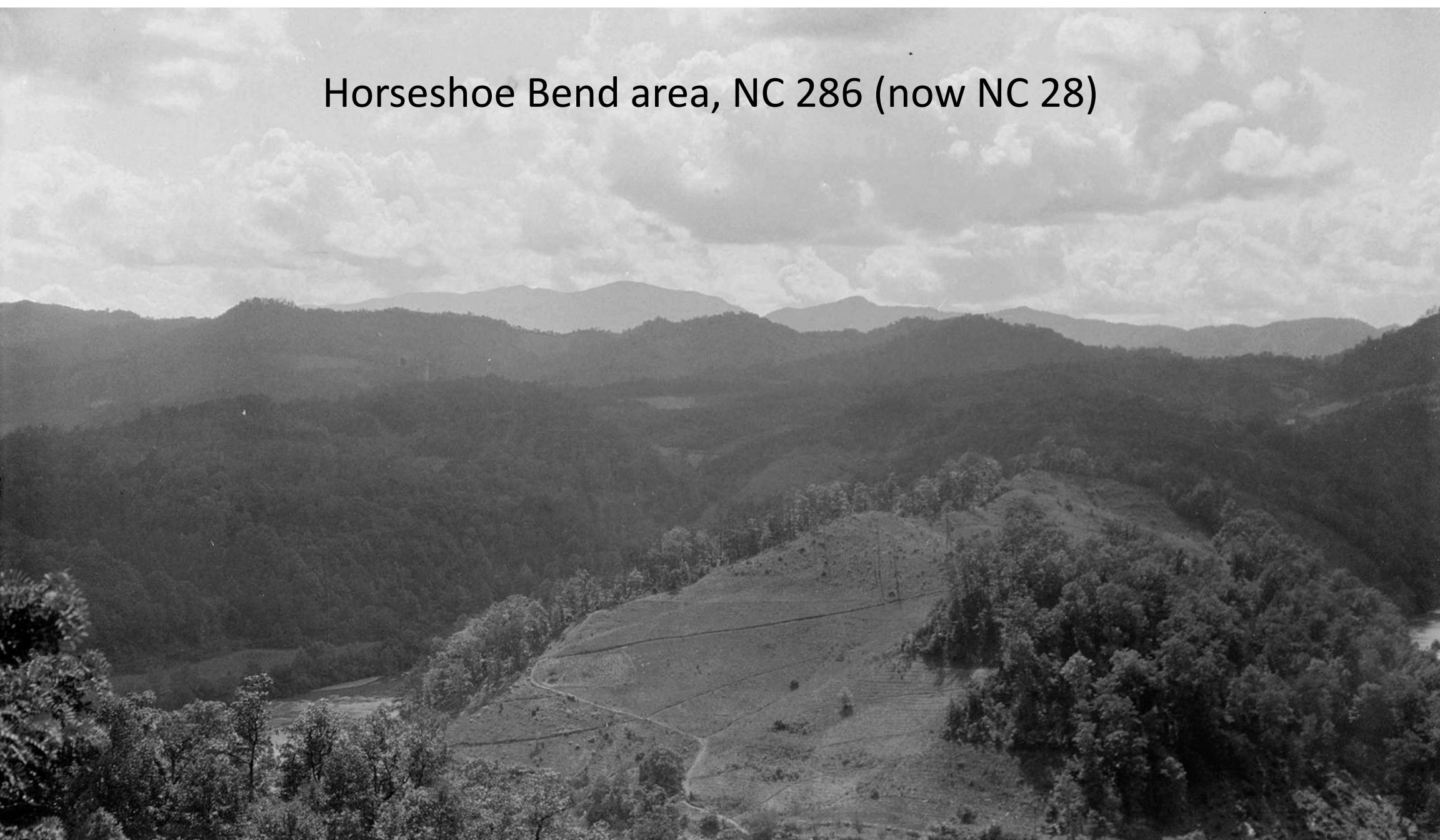


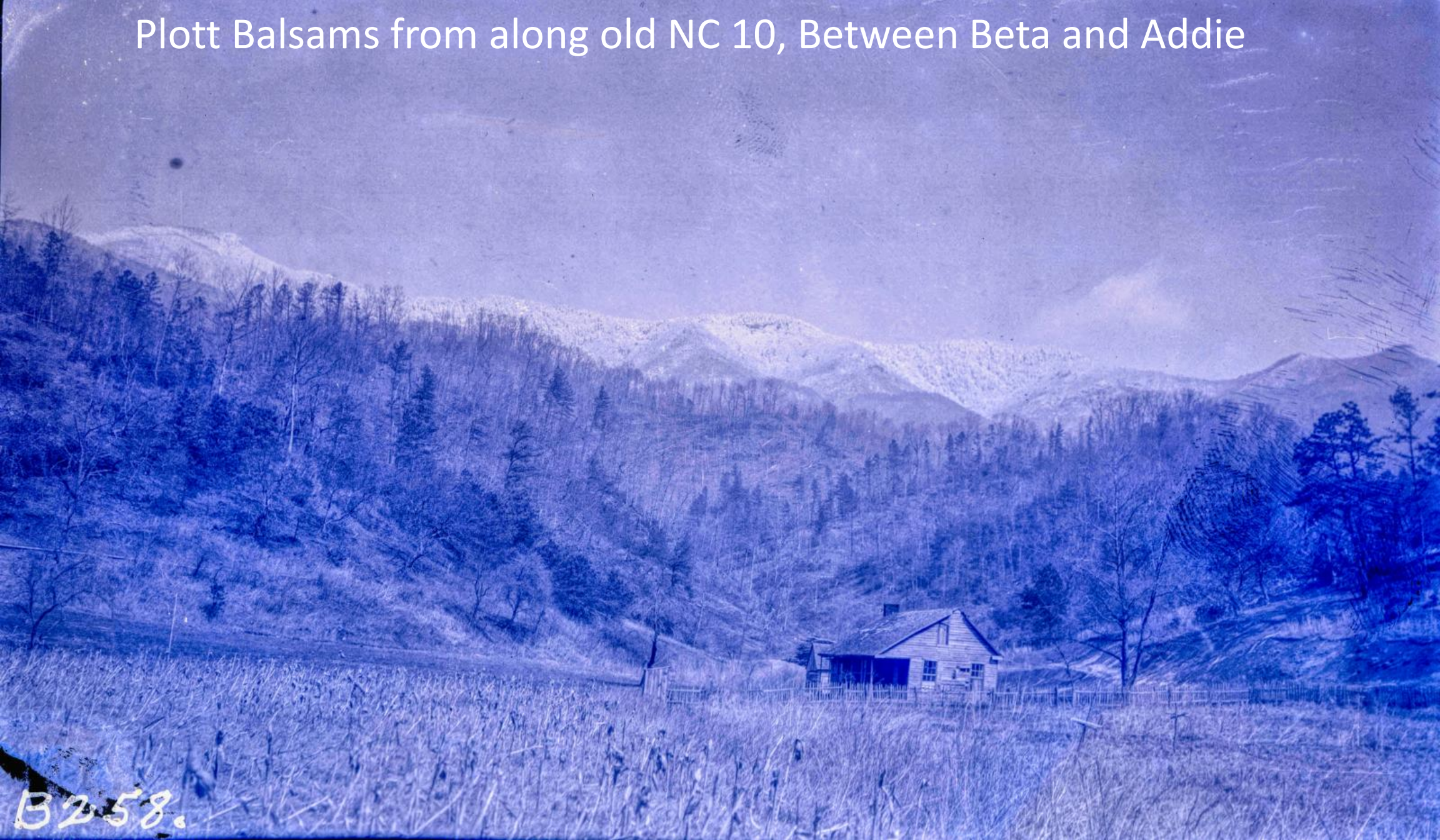
Horseshoe Bend area, NC 286 (now NC 28)



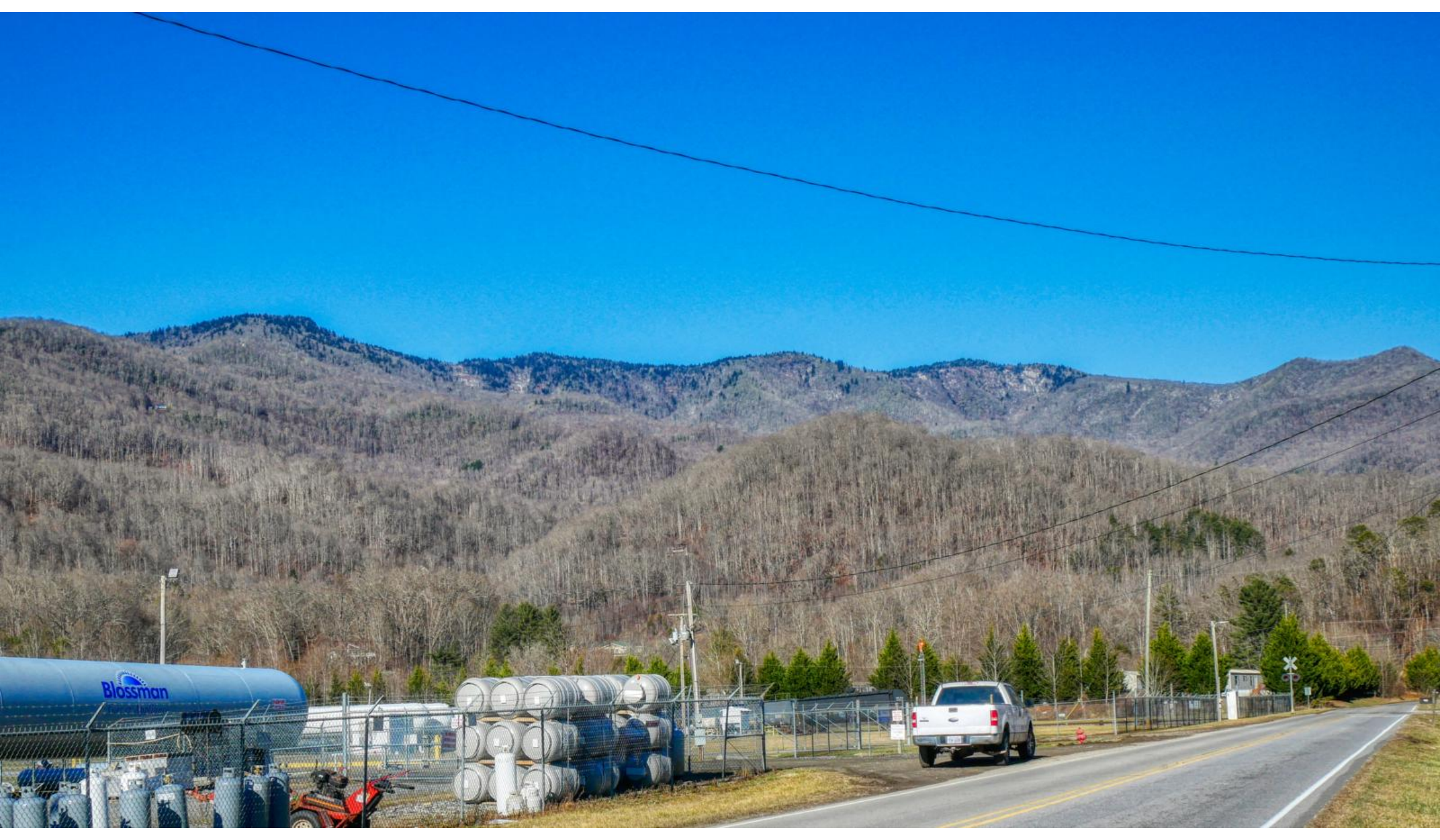
Ferguson Fields (modern photo by Heath Hyatt)
Perhaps Tom Ferguson on the tractor



Plott Balsams from along old NC10, Between Beta and Addie



B258.



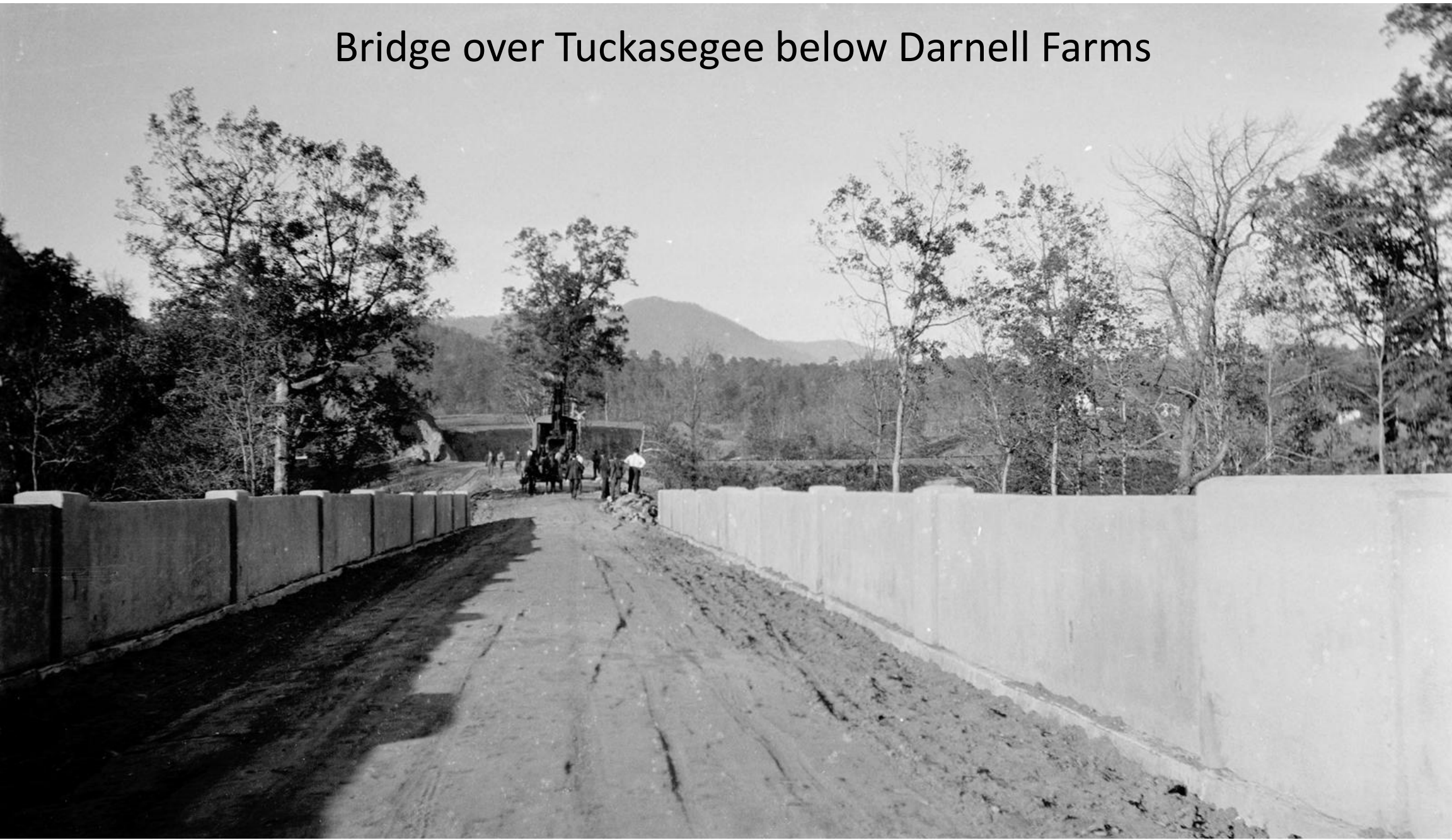
Ferguson Fields



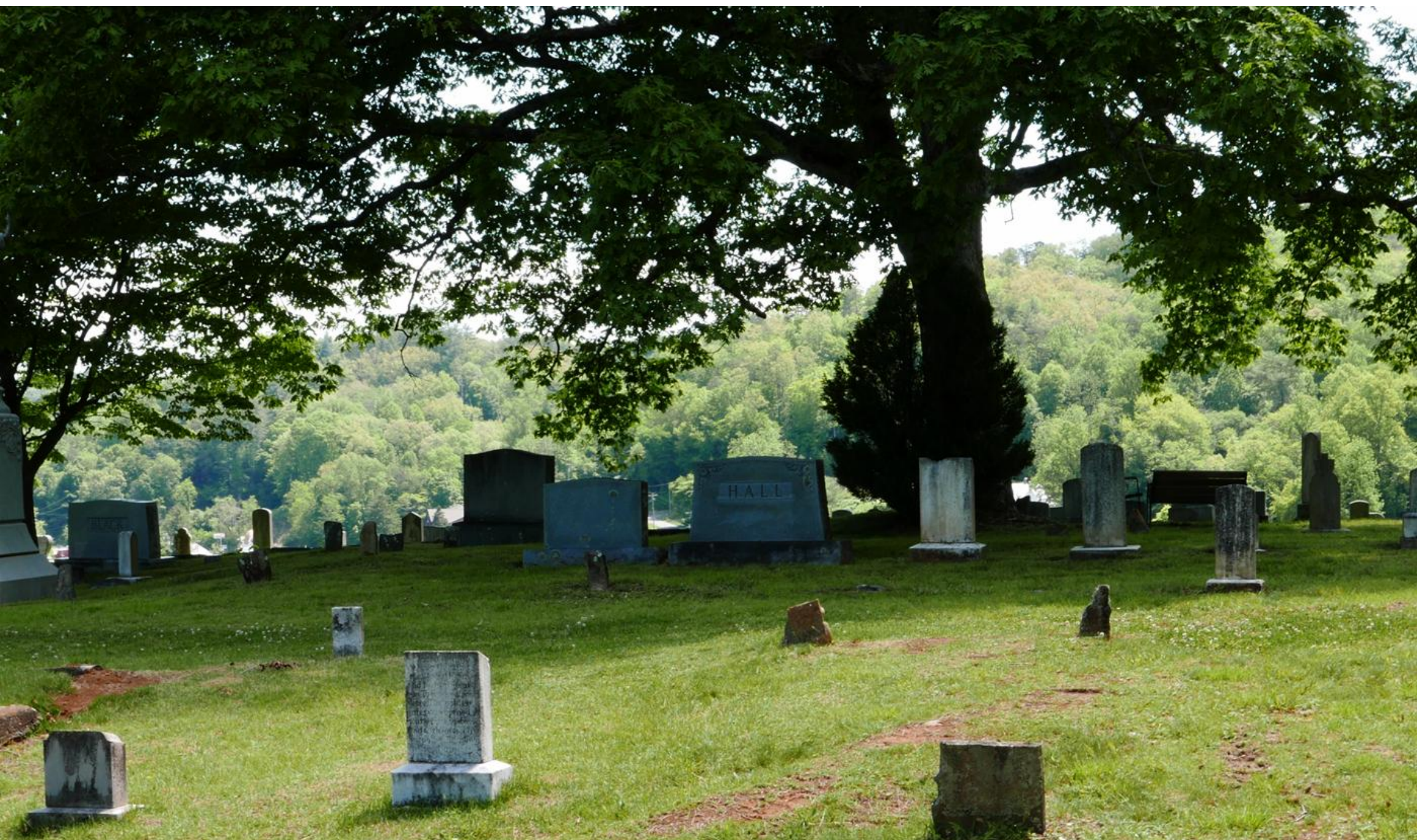
NC 10 road work, just east of Bryson City



Bridge over Tuckasegee below Darnell Farms



Grave of Frank Webb (1901-1928), Bryson City Cemetery. The decorated grave at right is his sister, Margrie (1899-1922).



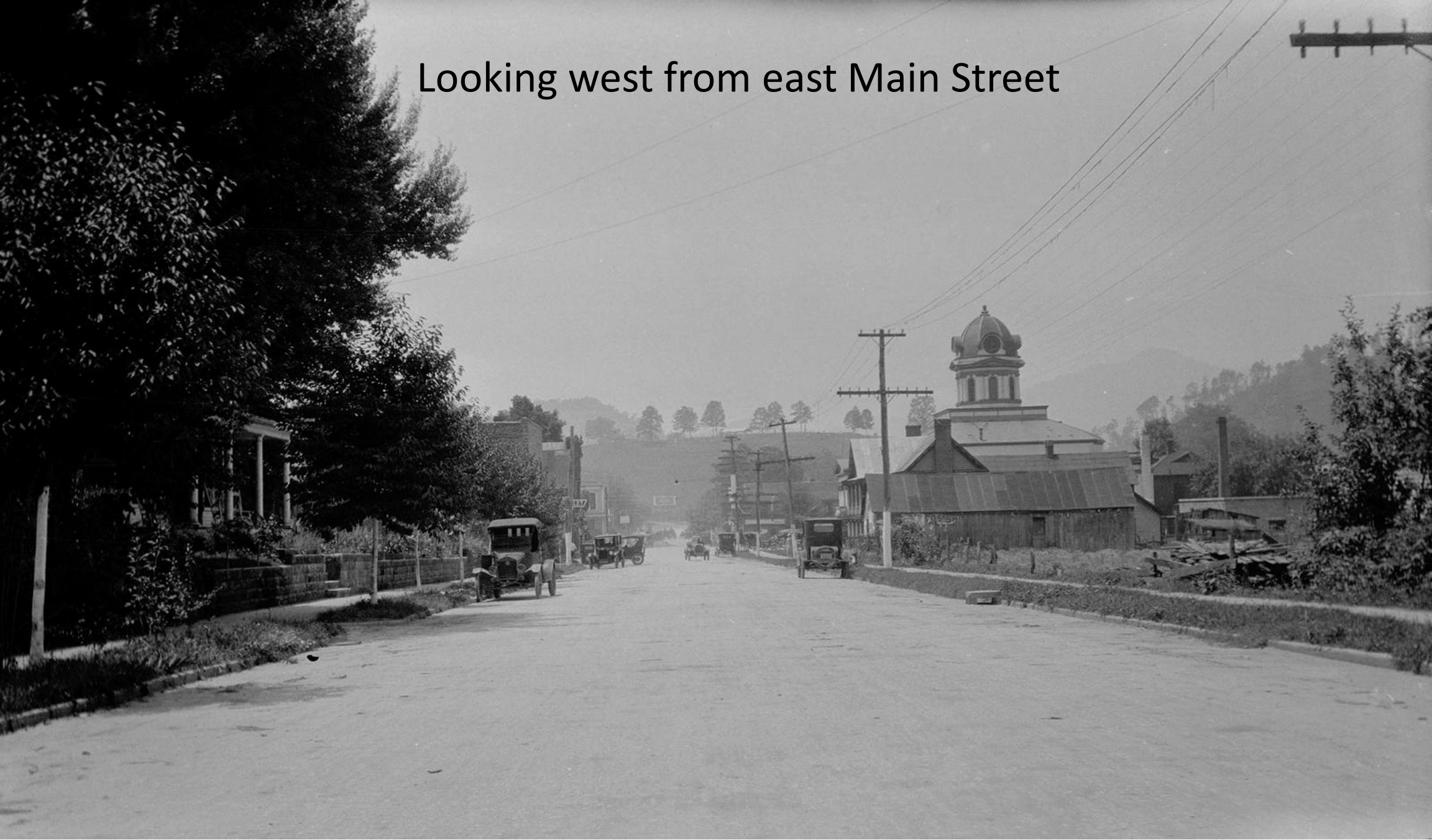
Looking up Deep Creek from Leatherwood Hill (now Hospital Hill)



View toward Sharp Top (right) and beyond, Kelly Bennett Peak (left side of the vee notch) from the #5 green of the BC Golf Course



Looking west from east Main Street



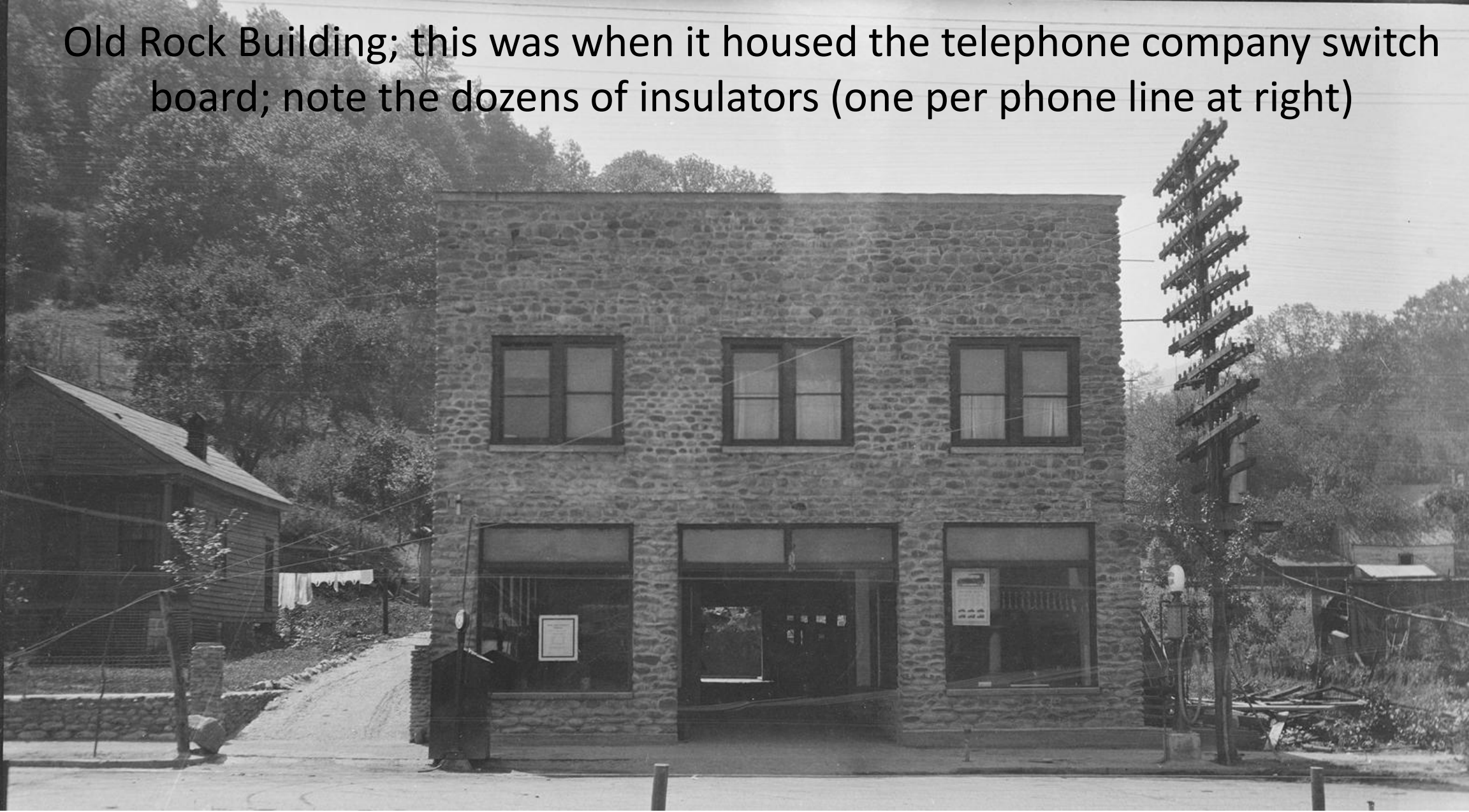
Presbyterian Church



Old Rock Building



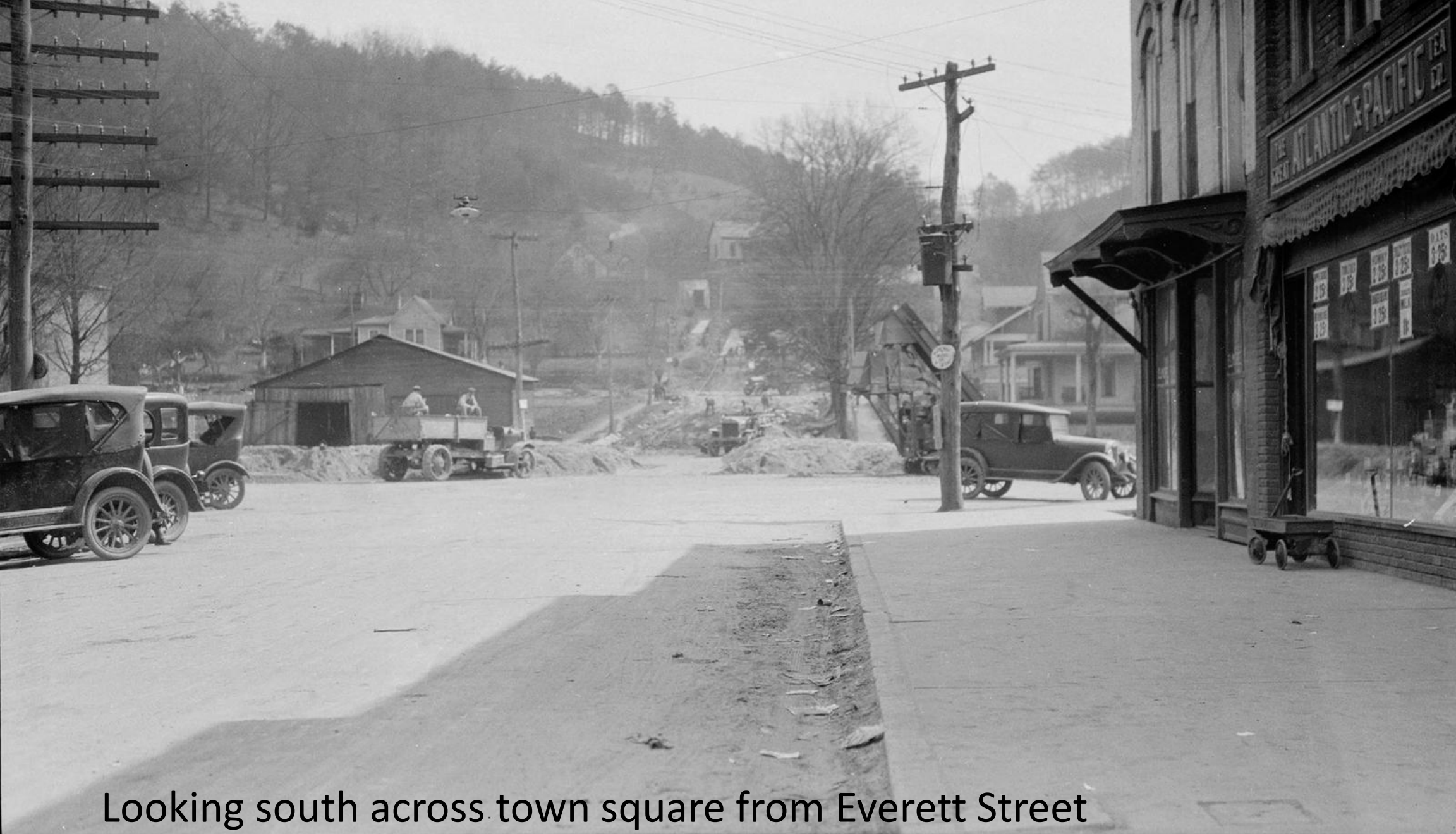
Old Rock Building; this was when it housed the telephone company switch board; note the dozens of insulators (one per phone line at right)



Looking north across town square
from base of Rector Street



I took the photo from a bit up Rector Street, so more of the mountains show.



Looking south across town square from Everett Street



South end of Rector Street; paving underway



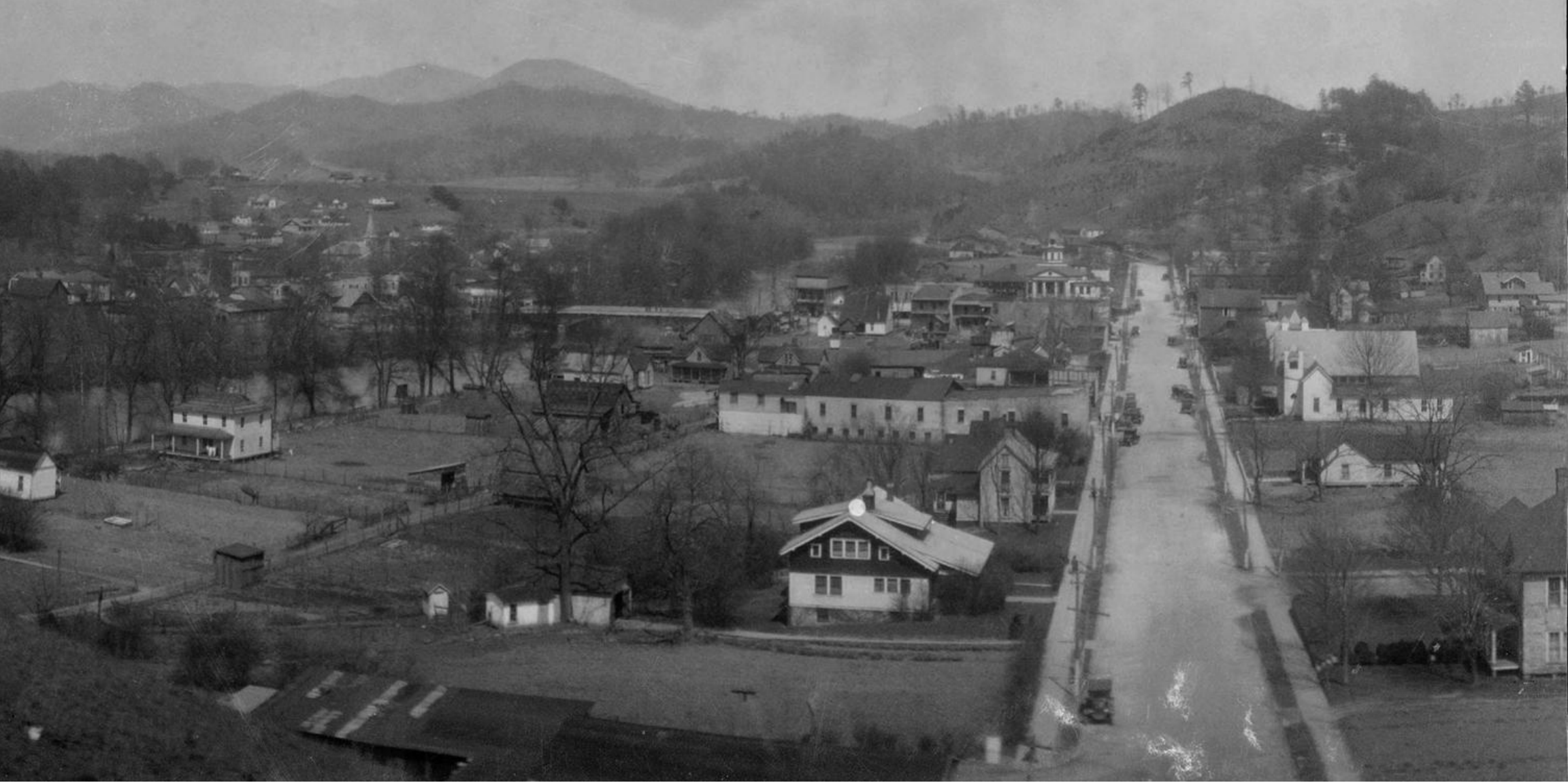
Home at intersection of Rector and Academy Streets



View to the west along NC 10 from near current Hot Spot



Looking east on Main Street from the Bryson City Cemetery

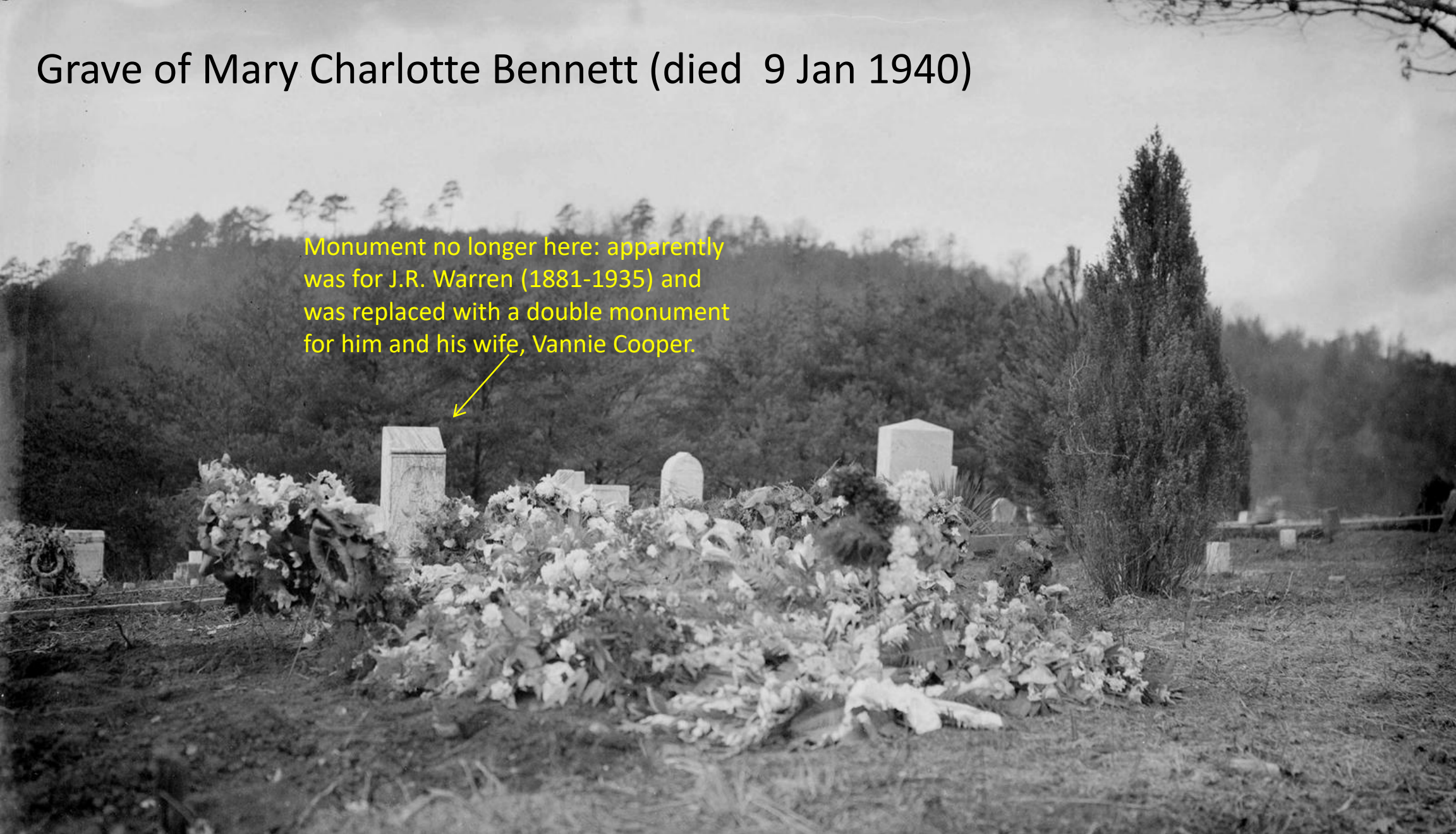






Grave of Mary Charlotte Bennett (died 9 Jan 1940)

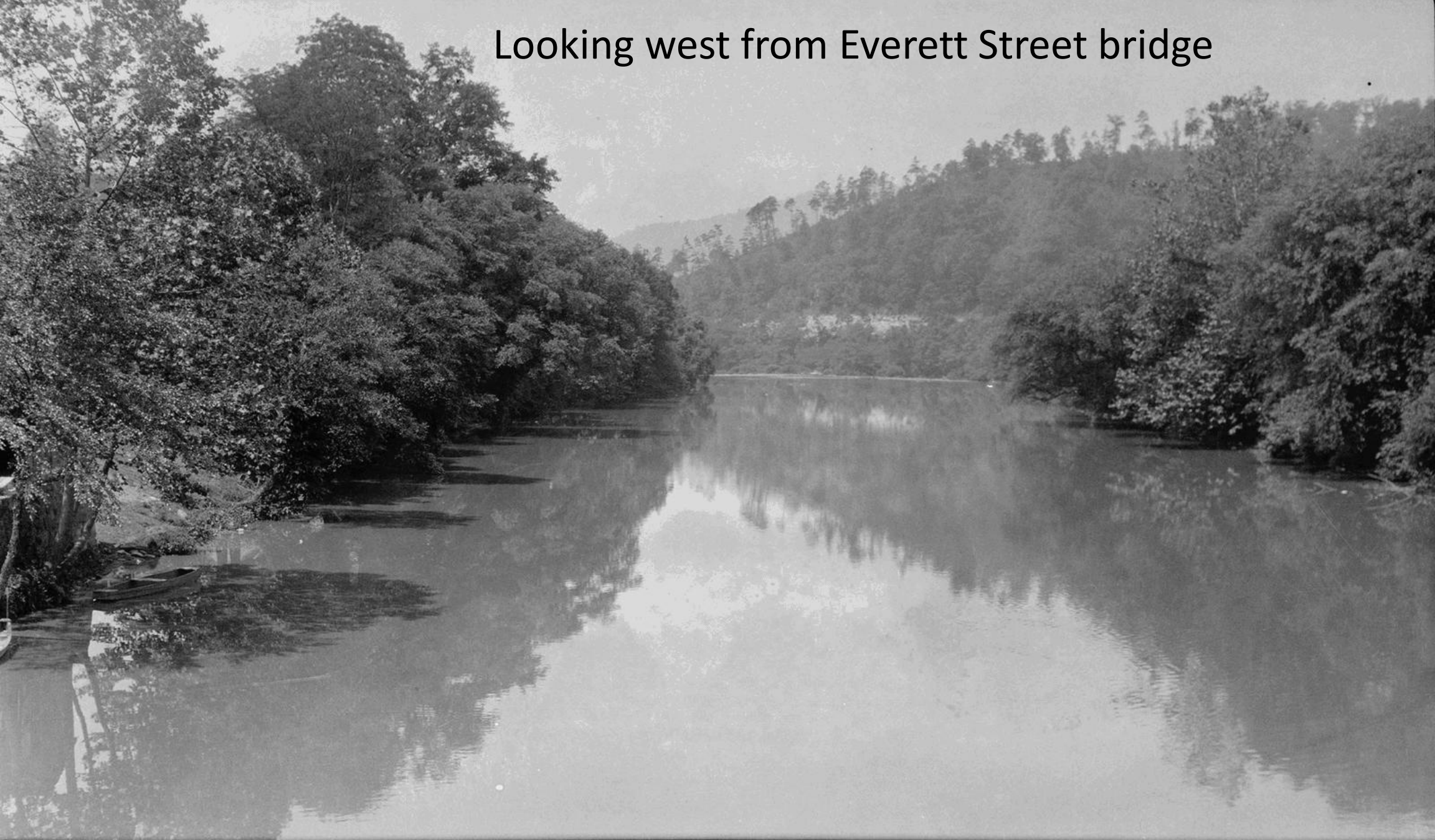
Monument no longer here: apparently was for J.R. Warren (1881-1935) and was replaced with a double monument for him and his wife, Vannie Cooper.



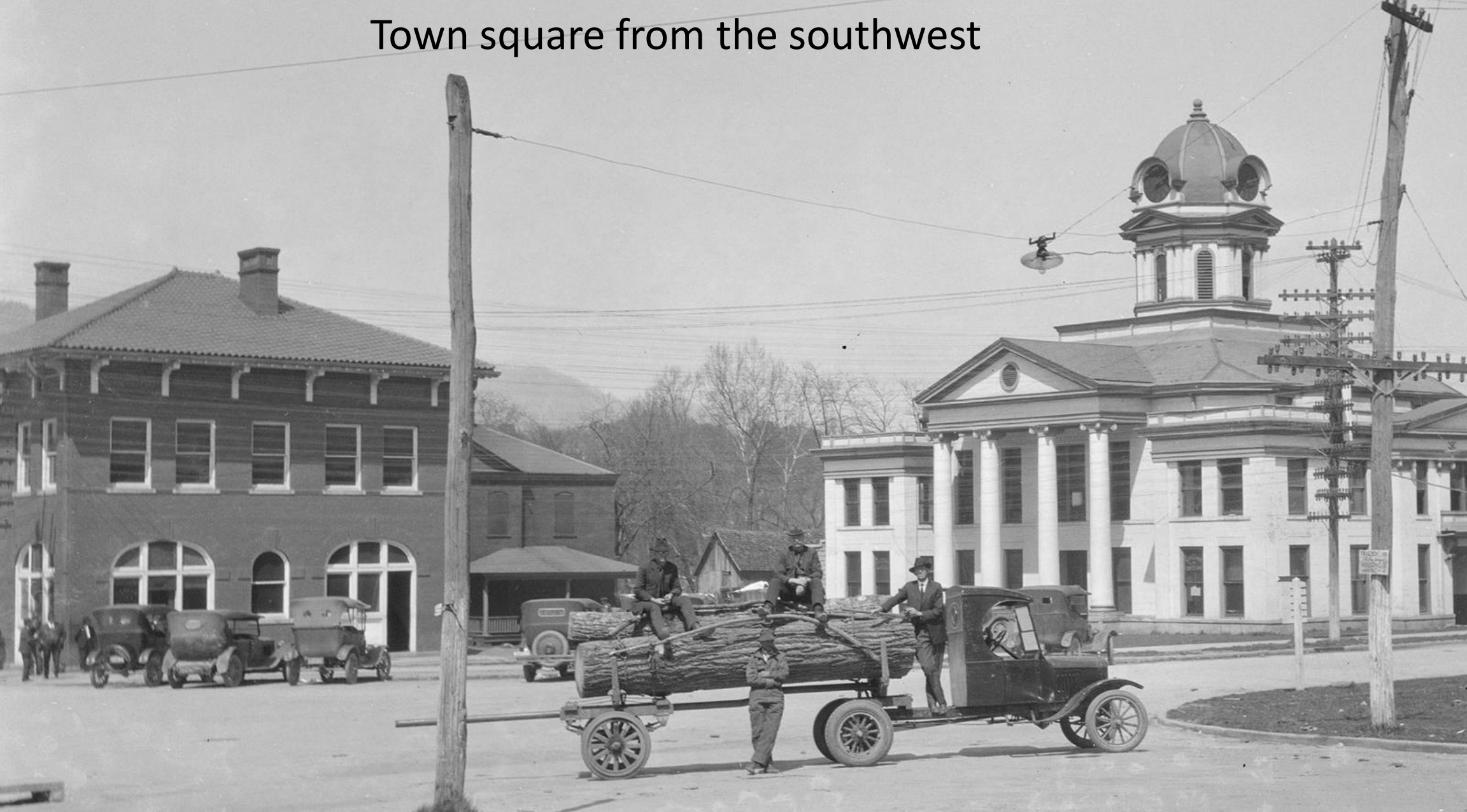
Looking east from Everett Street bridge

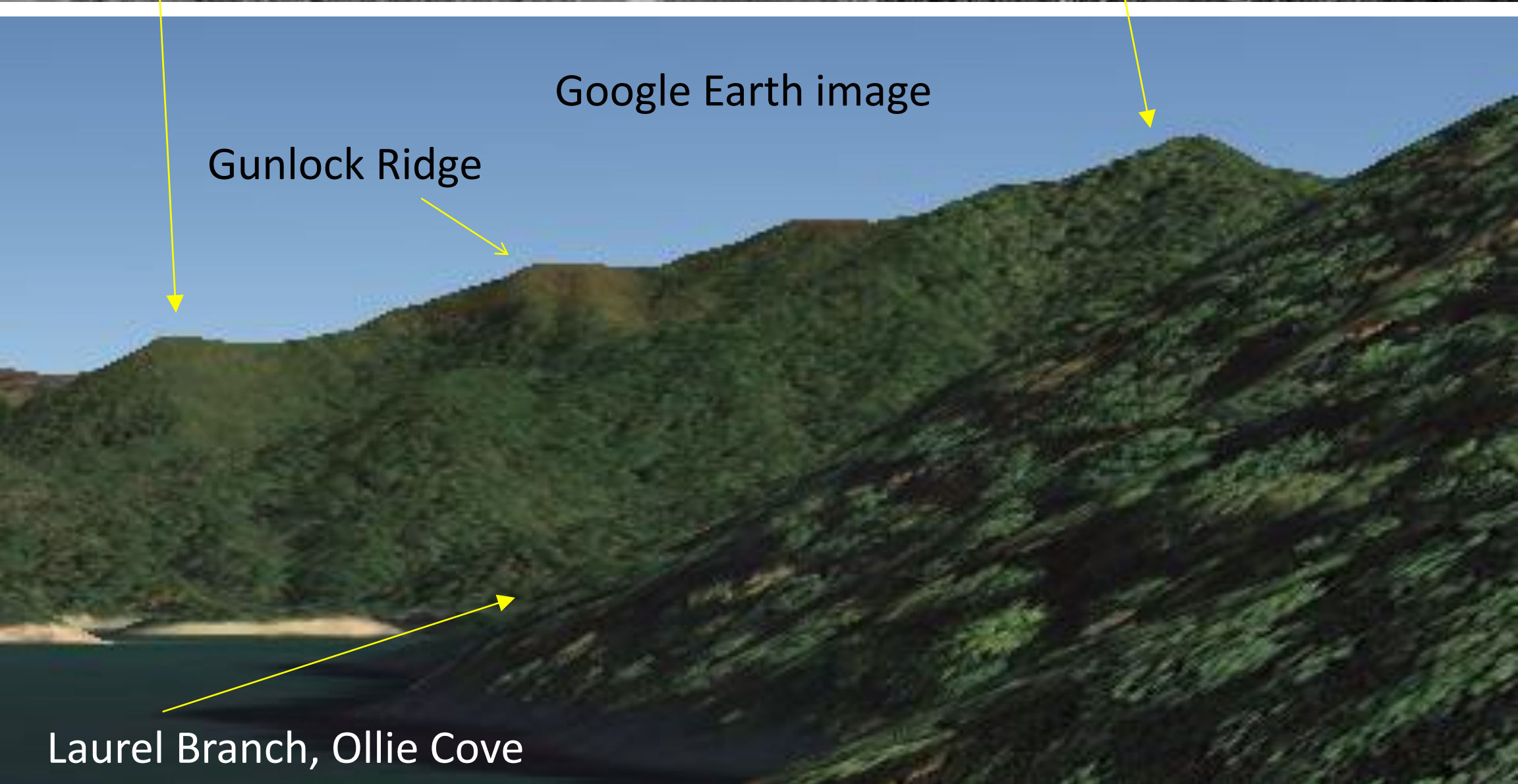
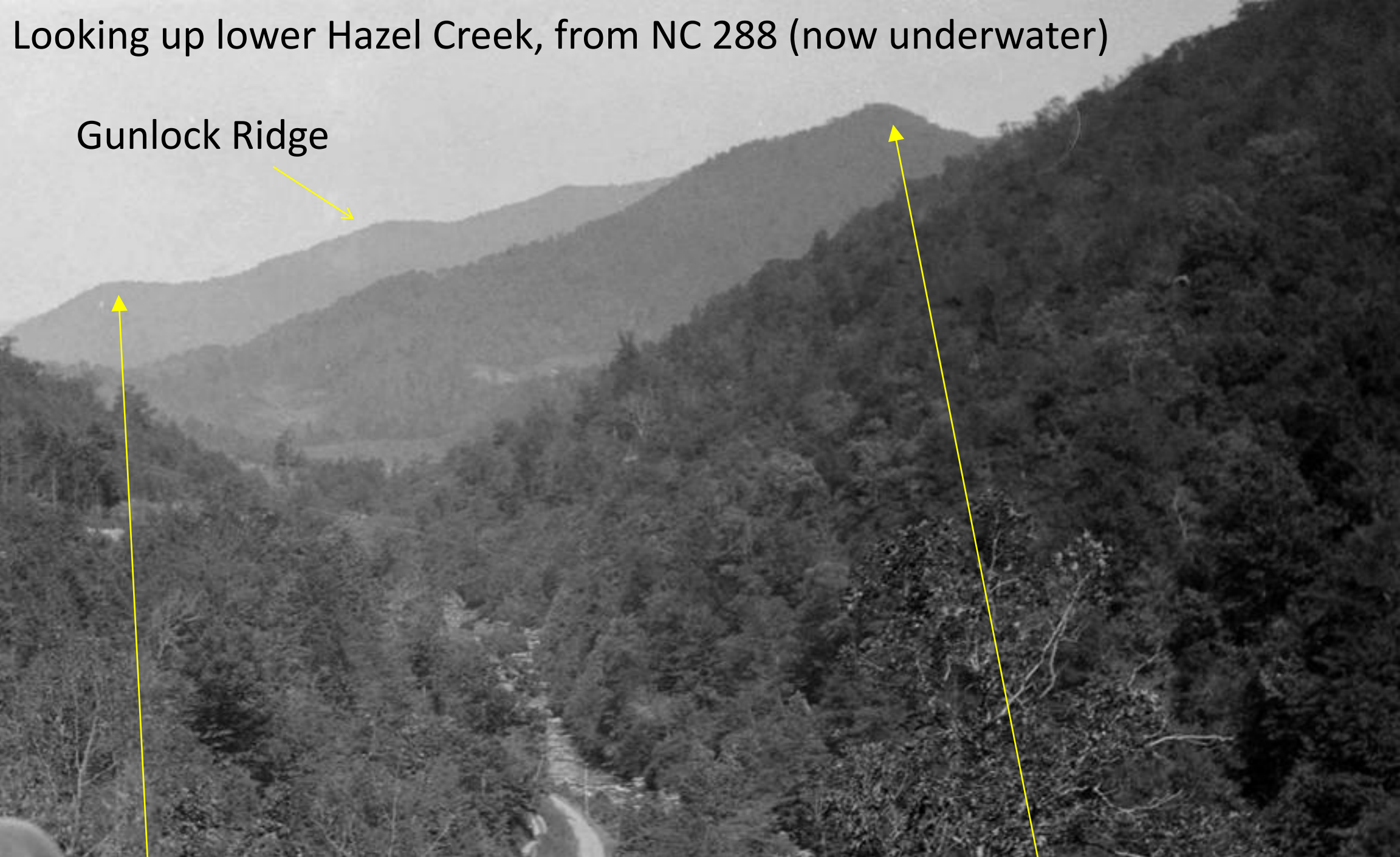


Looking west from Everett Street bridge



Town square from the southwest





Looking up lower Hazel Creek, from NC 288 (now underwater)

Gunlock Ridge

Google Earth image

Gunlock Ridge

Laurel Branch, Ollie Cove

